

# Baumit External Wall Insulation

**Comfort  
that  
pays**

**APPROVED**



- **Cuts costs and saves energy**
- **For new build or renovation**
- **Effectively reduces CO<sub>2</sub>**

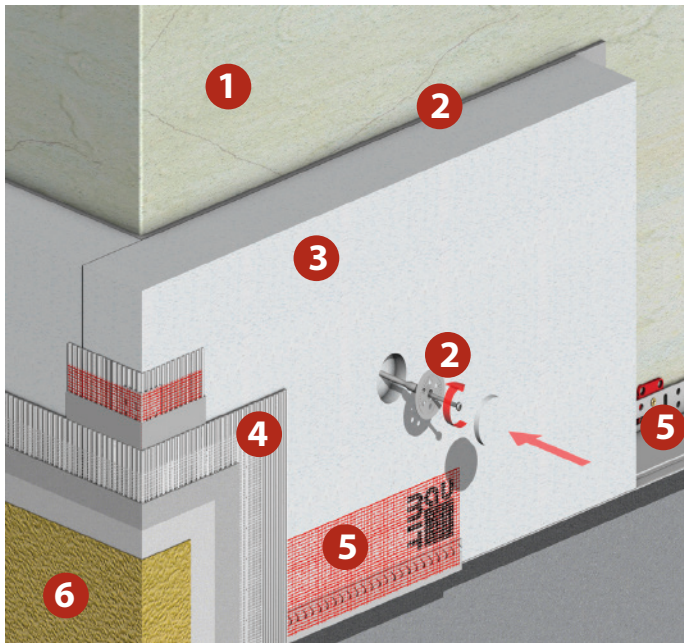
**email: [baumit@gmroi.ie](mailto:baumit@gmroi.ie)**

# External wall insulation

## An investment in the future

### Saving energy through thermal insulation

It is clear that a well insulated building will consume less energy and save on heating costs – after all heating accounts for at least 75% of the energy use of the average household. External wall insulation offers by far the simplest and most reliable solution for improved insulation performance. By wrapping the building in an insulating blanket, heat loss is dramatically reduced and the living environment is significantly improved. This proven thermal upgrade solution is tried and trusted for many decades on building projects around the world. It is ideal for old and new buildings, individual houses, apartments and non-residential buildings.



#### External wall insulation...

- Cuts heating costs!
- Improves internal living comfort!
- Provides additional sound proofing!
- Transforms the building's appearance!
- Reduces CO<sub>2</sub> and protects the environment!
- Boosts property values!

#### Custom made for every need

*Baumit External Wall Insulation offers a wide range of solutions for all building types from single houses to multi-storey developments, from new build to renovation. The system is fully certified and the exact specification is tailored to meet the needs of each project, whether residential or commercial, in compliance with all current building regulations.*

### System Description

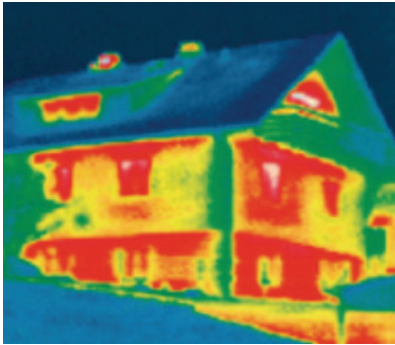
<b>1 Substraight</b>	Suitable for new or existing concrete, masonry or rendered surfaces.
<b>2 Adhesive &amp; fixings anchors</b>	A highly polymerised cementitious dry mortar is used to bond the insulation to the background. For additional security, supplementary mechanical fixings are used where required.
<b>3 Insulation boards</b>	The insulation specification is selected to ensure optimum performance on every project type. The Baumit system includes expanded polystyrene (EPS), mineral wool and phenolic boards.
<b>4 Basecoat with reinforcement</b>	A base coat of highly polymerised cementitious dry mortar embedded with alkali resistant glass fibre reinforcing mesh to provide mechanical stability, flexibility and enhanced durability.
<b>5 Ancillaries</b>	The fully certified system includes with all necessary beads, trims and ancillary components.
<b>6 Topcoat finish</b>	Thin coat high performance Baumit renders are weather resistant and vapour permeable. They afford virtually unlimited scope for styling the façade in an extensive range of colours and textures. Additional finish options include ceramic brick slips.



# Thermal renovation

## A new future for old buildings

External wall insulation really comes into its own when used on existing buildings. It used to be that renovating a building façade was simply about improving the appearance – but no longer! Baunit External Wall Insulation not only will your home look better, but you will also save energy, raise comfort levels and add value to your property!



### ■ Avoid energy losses

Thermal imaging clearly shows where cold bridging causes wasteful heat losses. This doesn't have to be the case. Cold bridging can be prevented by a thorough balanced thermal renovation of your home.

### ■ Cut costs ... gain value

Specialist thermal upgrading of older buildings can lead to very significant reduction in energy consumption, getting maximum benefit from the thermal storage capacity of the wall structure. This results in year round benefits with the extra insulation keeping the home warmer in winter and cooler in summer. What's more an EWI project involves minimal disruption to building occupants.



### Case Studies

After EWI installation, not only was the appearance of both of these homes dramatically improved, but also there was an immediate saving in heating costs. Both owners reported a real improvement in living comfort throughout the day, as well as a noticeable increase in sound proofing from outside noise.



# Benefits for new build

## That won't cost the earth

Baunit EWI system can bring significant benefits to new build projects. As a highly cost effective insulation method, it can be used to achieve improved energy performance along with a very attractive building façade.



### ■ Save on building costs

EWI provides a highly competitive method of insulating new buildings, and it is ideally suited to single leaf wall construction in dense concrete blockwork, lightweight masonry or reinforced concrete.

### ■ Save on heating costs

Effective insulation performance prevents thermal bridges and dramatically reduces energy consumption.

### ■ Amazing design flexibility

Baunit EWI system uses a range of different insulants and a huge choice of finishes so the building designer has great flexibility in achieving their design objectives.

# Perfectly insulated

Just as you'd expect

Grafton brings the very best of European expertise right home to Ireland. Here are some of the many reasons to choose a Baunit EWI system:



**COMPLETE SYSTEM** - Baunit EWI System is a fully integrated system offering the widest design choice available so you can be sure that your needs will be met.

### Insulation Materials

- **Baunit EPS System** uses expanded polystyrene, a highly efficient and economical insulant with proven performance over many decades.
- **Baunit open Climate Façade System** uses specially enhanced EPS boards for improved breathability.
- **Baunit Mineral Wool System** readily meets the demanding requirements of multi-storey and commercial buildings.
- **Baunit XS022 System** uses phenolic boards for the very highest insulation performance.

### Render Finishes

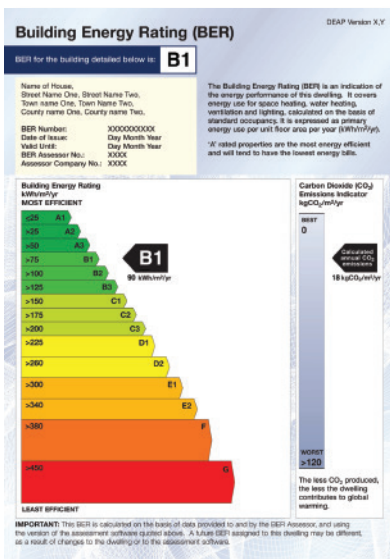
- Wide selection of acrylic, silicon and mineral based finishes, giving limitless choice of design features, colours and textures.
- Proven solutions for high impact areas.

**SUPERIOR PERFORMANCE** - Our Approved Installers are trained to ensure that the recommended EWI system suits the specific needs of each project. Installation is to be carried out in accordance with Baunit Quality System, assuring clients of the highest standards at all times.

**TECHNICAL SUPPORT** - Whether for U-value calculations, project costing or access to Baunit database of construction details, our backup team is equipped to deliver first class levels of support.

# Don't wait - insulate...

Grants now available!



## Building Energy Rating

A **Building Energy Rating (BER)** is similar to the energy label on your fridge with a scale of A to G. The most energy efficient homes are A-rated and the least efficient are G-rated.

A BER Certificate is compulsory for all homes being sold or rented. The BER assessment also includes an Advisory Report which will help you to identify how you might improve the energy performance of your home.

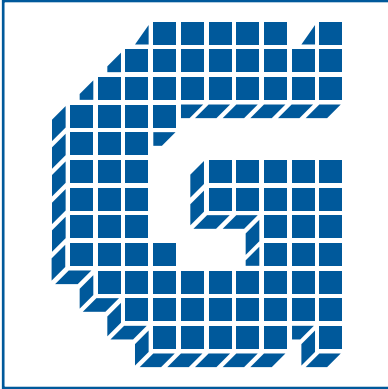
Upgrading and improving insulation is one of the most cost effective methods of reducing heating bills and improving the carbon footprint of a dwelling.

With substantial financial support available under the Irish government grant scheme there has never been a better time to install external wall insulation.

email: [baunit@gmroi.ie](mailto:baunit@gmroi.ie)

# A strong partnership

## Grafton Group Plc & Baumit



### The Grafton Group ... a leading name in building materials

Grafton Group Plc is the largest builders and plumbers merchanting business in Ireland, trading from 54 locations nationally, with strong local and national brands with a reputation for high quality products and customer services.

Grafton Group Plc has been appointed as sole agents in Ireland for the Baumit range of products bringing the very best of European technology to the Irish market.

The Baumit range is now available through the Grafton group companies of Heiton Buckley, Cork Builders Providers, Chadwicks, Tullamore Hardware, and Eddies Hardware giving a supply chain nation wide.

Our fully stocked stores have all the material for your next project.



### Baumit ... a European pioneer in external wall insulation

As a pioneer in the field of external wall insulation systems with almost forty years' experience in Germany, Austria and many central and eastern European countries, Baumit supply over twenty million square metres annually. Their reference list includes such prestige projects as Schönbrunn Palace in Vienna, the Reichstag building in Berlin, the Doge's Palace in Venice, the Kremlin in Moscow and Neuschwanstein Castle in Bavaria.



### Technical approvals ... our commitment to quality

The Baumit EWI System is certified by NSAI under Irish Agrément certificate 09/0336. Baumit also holds current European Technical Approval (ETA) certificates for the complete system in accordance with the internationally recognised **ETAG 004 Guidelines for Technical Approval of External Thermal Insulation Composite Systems with Rendering**. In addition all system components are fully certified to the relevant EN standards.



### External wall insulation... history and experience

**External wall insulation (EWI)** has been in widespread use for many decades as a highly effective thermal insulation improvement measure, with long lasting performance and proven durability.

Throughout Europe **external thermal insulation composite systems (ETICS)** are the preferred method of insulating walls. EWI systems are also the main component of super insulated housing such as 'passiv haus'.

In North America these systems are known as **external insulated façade systems (EIFS)** and they are also widely used as a reliable and effective insulation method.



NEW  
FROM COLOURS  
BAUMIT



*Life*  
COLORED BY BAUMIT

Your local approved installer:

**BAU  
MIT**  
baumit.com

For further information, advice and quotations please contact you nearest Grafton group company:

**Heiton Buckley**  
BUILDERS MERCHANTS

Dublin Tel: (01) 408 9500 • Limerick Tel: (061) 430 100  
Sligo Tel: (071) 916 1701 • Castlebar Tel: (094) 902 1377  
www.heitonbuckley.ie

**CHADWICKS**  
"The Home of Building Materials"

Galway Tel: (091) 753 220  
www.chadwicks.ie

**EDDIES  
HARDWARE**  
a Heiton Buckley company

Tel: Drogheda (041) 983 6292

**CF CORK BUILDERS  
PROVIDERS LTD.**

Tel: Cork (021) 496 1700  
www.corkbp.ie

**Tullamore Hardware**  
a Heiton Buckley company

Tel: Tullamore (057) 934 1411

email: [baumit@gmroi.ie](mailto:baumit@gmroi.ie)